



New MIS Functionalities

Horizontal Support to Coordination with International Financial Institutions and bilateral donors in the Western Balkans
EuropeAid /134120/C/SER/MULTI

What makes MIS2 really new?

- *MIS² is user-centric: every user operates from a personal dashboard listing tasks and favourites*
- *All MIS² actions are driven by tasks*
- *Tasks can be delegated, even automatically, and possibly declined*
- *Every task carries all the information needed to accomplish it: non need for browse or search for documents*
- *MIS² is web-based, browser-agnostic, and requires no additional software installed*
- *Investment projects (LFIs) and Grant projects (IPFs) are independently tracked, and dependencies can be enforced*



3 tasks due by next week



2 tasks overdue



1 new task



2 delegated tasks

Today, 26.09.2014

Friday

Assign Screener Plava voda, Regional water supply, TA-BIH-03

« September 2014 »

Mo	Tu	We	Th	Fr	Sa	Su
25	26	27	28	29	30	31
1	2	3	4	5	6	7
8	9	10	11	12	13	14
15	16	17	18	19	20	21
22	23	24	25	26	27	28
29	30	1	2	3	4	5

Search ▾

Search term

Sort by ▾

Selected tasks ▾

Delegate

Approve ToR

TA-ALB-10 | Albania Schools' Project

24.09.2014

Enter Screening Conclusion

WB9-HR-SOC-02 | Zadar University: Learning Resource Centre

25.09.2014

Assign Screener

TA-BIH-03 | Plava voda, Regional water supply

26.09.2014

Favorite documents



The WBIF MIS²

The MIS² works following several perspectives, each addressing different audience:

- (1) Structured data classifying projects*
- (2) Repository of documents related to projects*
- (3) Management of Grant projects during their lifetime*
- (4) Production of aggregate statistics*

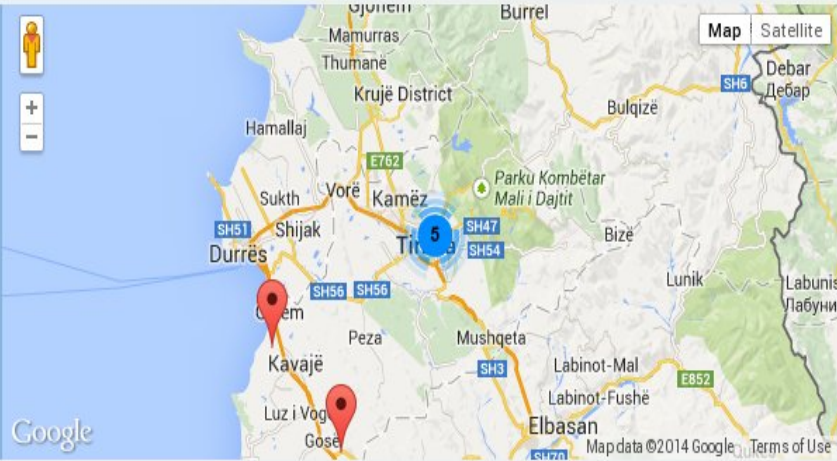
Every user category (public | registered users | project managers, task assignees) comes with different, specific rights to access projects facts.

Projects

- Back
- Browse by Country/Area
- Browse by Sector
- Browse by Donor/Lender
- Browse by Round

Browse by Country

- Albania**
23 projects
- Bosnia and Herzegovina**
33 projects
- Croatia**
8 projects



Projects | Status & Results | Charts | Filter results:

Title	Code	Round	Lead IFI	Investment	Sector	Status	Approval date
Albania Schools' Project	TA-ALB-10	1	EIB	€76,000,000	Social	Complete	11.01.2010
Albanian Railway Network: Infrastructure and Signalling Improvement Project	TA-ALB-06	1	EBRD	€200,000,000	Transport	Complete	11.01.2010
Detailed Designs for Lezha and Shengjin Sewerage Networks	TA2-ALB-ENV-01	2		€2,700,000	Environment	Complete	09.04.2010

Search projects

Refine by

« September 2014 »

Mo	Tu	We	Th	Fr	Sa	Su
25	26	27	28	29	30	31
1	2	3	4	5	6	7
8	9	10	11	12	13	14
15	16	17	18	19	20	21
22	23	24	25	26	27	28
29	30	1	2	3	4	5

Status

- Complete
- ToR preparation
- Ongoing

Sector

- Energy
- Environment

Perspective 1: Structured data

MIS² stores data in a structured way:

- ✓ *Grant application forms are entered on-line, validated before submission, then a PDF file is automatically generated*
- ✓ *Drop-down choices replace free text wherever possible*
- ✓ *Investment projects and related grant requests are broken down respectively in activities and service required*
- ✓ *Financial data are bound to respective activities and services*

This allows improved aggregate reporting and increased data consistency

Perspective 2: Documents repository

MIS² is the intended storage for several project documents:

- ✓ *Grant requests (PGAF) generated from forms filled on-line*
- ✓ *Terms of Reference*
- ✓ *Final deliverables*
- ✓ *Closure documents*
- ✓ *... and every document is versioned and never deleted, just marked as inactive*

This simplifies the access to documents, reduces email exchanges, and increases the overall reliability

Perspective 3: Project management

MIS² supports the management of Grant projects through:

- ✓ *Definition of workflows and tasks assigned to specific users*
- ✓ *Project process driven by milestones and pre-requisites*
- ✓ *Alerts on approaching of deadlines, and in case of overdue*
- ✓ *Assigner can monitor assigned tasks*
- ✓ *Users can monitor upcoming events*

This implies less room for mistakes and omissions, and a closer and timely control on actions



Search ▾

Search term

Sort by ▾

Selected tasks ▾

Approve ToR

TA-ALB-10 | Albania Schools' Project



24.09.2014

Enter Screening Conclusion

WB9-HR-SOC-02 | Zadar University: Learning Resource Centre



25.09.2014

Assign Screener

⊞ 2 projects

Assign Screener

TA-BIH-03 | Plava voda, Regional water supply

26.09.2014

Assign Screener

TA-SER-26 | Western Serbia - 400KV transmission system upgrade

26.09.2014

Enter Assessment Conclusion

⊞ 3 projects

Assign ToR agent

⊞ 2 projects

Approve ToR

Albania Schools' Project

TA-ALB-10

Due

24.09.2014

Terms of Reference



Other relevant content

Project synopsis



Conclusions and Recommendations to SC



Discussion on Assessment



Discussion on Screening



Application form



Comment

✓ Approve

⊘ Reject

Perspective 4: Aggregate statistics

The MIS² use of structured data allows significant enhancements respect to spreadsheet-like organisation:

- ✓ *Reports generated according to user-selectable layouts, parameters and filters*
- ✓ *Elaboration of indexes out of the bulk data*
- ✓ *Mixing of tabular and graphical data*

Mixed text-tables-graphics reports based on templates is possible, although not included in the first release



Select report

Report: Tracking development of the WBIF pipeline

From: 2008 To: 2014

Download

Parameters to show:

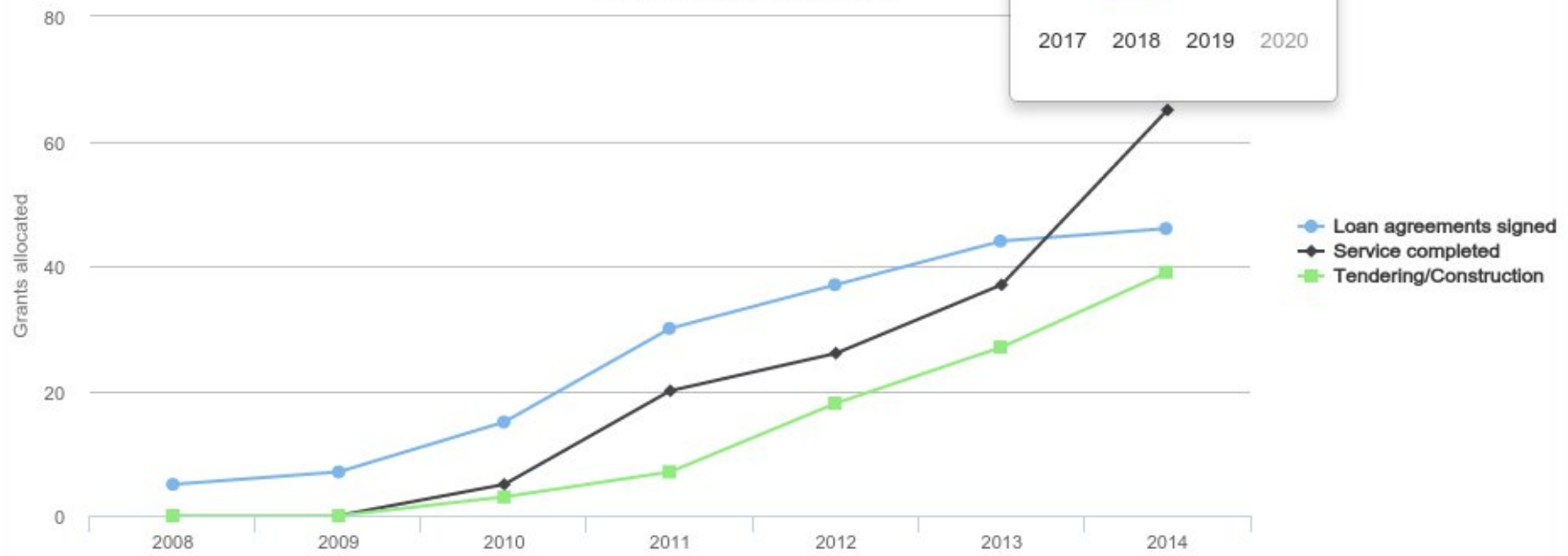
- Loan agreements signed
- Service completed
- Tendering/Construction

« 2010-2019 »

2009	2010	2011	2012
2013	2014	2015	2016
2017	2018	2019	2020

Tracking development of the WBIF pipeline

Per Year, no. of Grants allocated



The role of LFIs in MIS²

- *At grant request time, describe the Investment project the grant request contributes to, or make sure that its description is accurate*
- *At consultation time, provide an assessment of the grant request*
- *At grant approval time, upload ToR once available (if JF)*
- *Keep updated the concerned Investment projects facts, operational and financial: this is a cyclical task which frequency is set by the task assigner*
- *At grant project conclusion time, upload closure documents and mark the project as “closed” (if JF)*

Investment projects and Grant projects

- *Investment projects are defined separately from the grant requests, and monitored independently from the grant action(s)*
- *Investment projects are broken down in activities, each with its cost estimate*
- *Grant requests are broken down in services, each related to an activity and to expected deliverables*
- *Data maintenance is assigned to different users: LFI's will maintain Investment projects data, IPF's will maintain Grant projects data, each with frequency defined by the related tasks*

Investment projects facts

Investment projects facts are provisionally identified as follows, basing on the actual data collected.

- *Project properties: country, sector, DAC and CRS codes, geo-data, list of activities*
- *Activity properties: type of financing, financier, estimate cost, start and end date, stage, rating, loan*
- *Loan properties: date of approval, probability of signature, first disbursement date, total disbursement to date*

The detailed description of facts is contained in the Technical Specifications, to be discussed with stakeholders once Functional Specifications are endorsed.

MIS²: what can be improved

Today

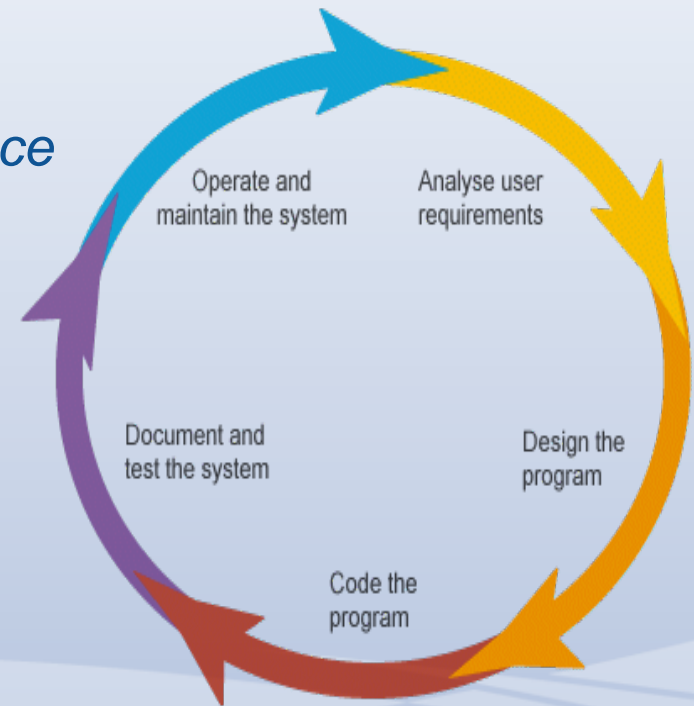
- *Project management functions are limited to Grant projects*
- *Aggregate reports are limited to tabular/graphic individual layouts*
- *Basic financial reports are produced*

Tomorrow

- Project management functions are extended to EWBJF projects
- Reports based on text templates can include multiple tables/charts
- Financial reports can follow more fund flows, according to the new EU Financial Regulations

MIS² Development cycle

- (1) *Design, formal description of behaviour (Functional Specs) and parameters (Technical Specs), stakeholders' acceptance*
- (2) *Development of code, and deployment on the staging server*
- (3) *Testing period, collection of bug track and “requests for changes”*
- (4) *Bug fixing with stakeholders' support, and deployment on the production server*
- (5) *Analysis of “requests for changes”, back to (1) with changes*



Development steps so far

The following steps have been completed:

- *Design of the system, unifying WBIF website and MIS, described in the “Functional Specifications” [FS] and the “Technical Specifications” [TS]*
- *08 October: FS v1 circulated to main stakeholders*
- *24 October: FS v1.1, incorporating initial comments, circulated to main stakeholders*
- *31 October: clarifications on FS circulated to main stakeholders*

Comments have been received from several but not all the key stakeholders. FS endorsement is required before the finalisation of TS and the development of code.

New MIS Functionalities

- Q & A

Thank you!



This project is funded by the European Union.

"The contents of this publication are the sole responsibility of the Consortium Mott MacDonald - Kommunalkredit Public Consulting - Action Global Communications and can in no way be taken to reflect the views of the European Union."